

## Hexagonal insulators Unipolar flat mounting busbar support Female to female hexagonal insulator

### References

Height H (mm)	Insert M	Depth D (mm)	Diameter E (mm)	Pack qty	Reference
20	M4	4	19	1	5031 2004
20	M6	4	19	1	5031 2006
25	M6	5	21	1	5031 2506
30	M6	6	33	1	5031 3006
30	M8	8	33	1	5031 3008
35	M6	8	33	1	5031 3506
35	M8	8	33	1	5031 3508
35	M10	8	33	1	5031 3510
40	M8	10	40	1	5031 4008
40	M10	10	40	1	5031 4010
45	M8	10	41	1	5031 4508
45	M10	10	41	1	5031 4510
50	M8	14	46	1	5031 5008
50	M10	14	46	1	5031 5010
50	M12	14	46	1	5031 5012
60	M10	14	50	1	5031 6010
65	M10	18	55	1	5031 6510
70	M12	25	55	1	5031 7012

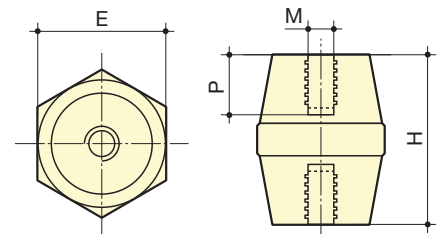


sb\_104\_a\_2\_cat

### Characteristics

Height H (mm)	Insert M	Nominal voltage (V) AC/DC	Insulation voltage (VAC) 50 Hz 1 min	Mechanical characteristics (daN)			Max. tightening torque (Nm)
				Peak	Flexion	Tention	
20 <sup>(1)</sup>	M4	500	3000	5500	70	170	9
20	M6	500	3000	5500	100	190	8
25	M6	500	3000	5500	170	370	12
30	M6	1000	6000	11000	200	650	22
30	M8	1000	6000	11000	360	800	40
35	M6	1400	9000	16000	230	720	25
35	M8	1400	9000	16000	380	900	42
35	M10	1400	9000	16000	320	800	44
40	M8	2000	12000	21500	620	1200	50
40	M10	2000	12000	21500	620	1100	60
45	M8	2000	12000	21500	550	1200	55
45	M10	2000	12000	21500	550	1100	65
50	M8	2000	12000	21500	650	1800	60
50	M10	2000	12000	21500	650	1700	70
50	M12	2000	12000	21500	660	13000	130
60	M10	2400	12000	27000	560	1600	85
65	M10	2400	12000	27000	750	1600	90
70	M12	2400	12000	27000	750	1500	135

(1) Admissible nominal current for a temperature in the cabinet of 45°C and 80°C for the bars.  
Other assembly configurations: please consult us.



sb\_105\_a\_1\_x\_cat